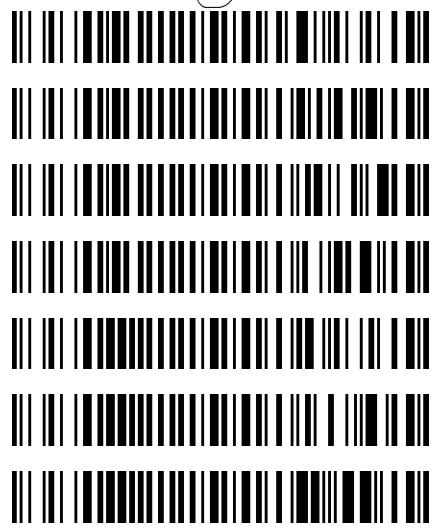


*Byylee*

**Worklist: 2224**

<u>LAB_CASE</u>	<u>ITEM</u>	<u>TASK_ID</u>	<u>DESCRIPTION</u>
M2018-0286	1	108952	AM 3 Urine Carboxy-THC
M2018-0451	3	108953	AM 3 Urine Carboxy-THC
M2018-0831	2	109058	AM 3 Urine Carboxy-THC
M2018-0885	2	108949	AM 3 Urine Carboxy-THC
P2018-0483	1	108950	AM 3 Urine Carboxy-THC
P2018-0583	1	108951	AM 3 Urine Carboxy-THC
P2018-0635	1	109057	AM 3 Urine Carboxy-THC



Data Path : I:\Instrument Data\Pocatello\Major Mass Spec\CDS\2018\am 3 worklist 2224\  
Data File : THC-PC1.D  
Acq On : 01 Mar 2018 13:19  
Operator : ISP\datastor  
Sample : Spiked Positive c-THC Control  
Misc : c-THC lot # 0497429 in Negative Lot # POC112116; Worklist 2224  
ALS Vial : 2 Sample Multiplier: 1

Integration Parameters: events.e  
Integrator: ChemStation

Method : C:\gcms\1\methods\TOX.M  
Title :

Signal : EIC Ion 371.00 (370.70 to 371.70): THC-PC1.D\data.ms

peak #	R.T. min	first scan	max scan	last scan	PK TY	peak height	corr. area	corr. % max.	% of total
1	4.712	30	44	56	BV	211	2556	13.58%	8.828%
2	5.360	258	270	300	VV	1224	18832	100.00%	65.034%
3	6.269	561	585	597	PV	153	3420	18.16%	11.811%
4	6.646	685	716	735	BV	138	4149	22.03%	14.327%

Sum of corrected areas: 28957  
Signal : EIC Ion 473.00 (472.70 to 473.70): THC-PC1.D\data.ms

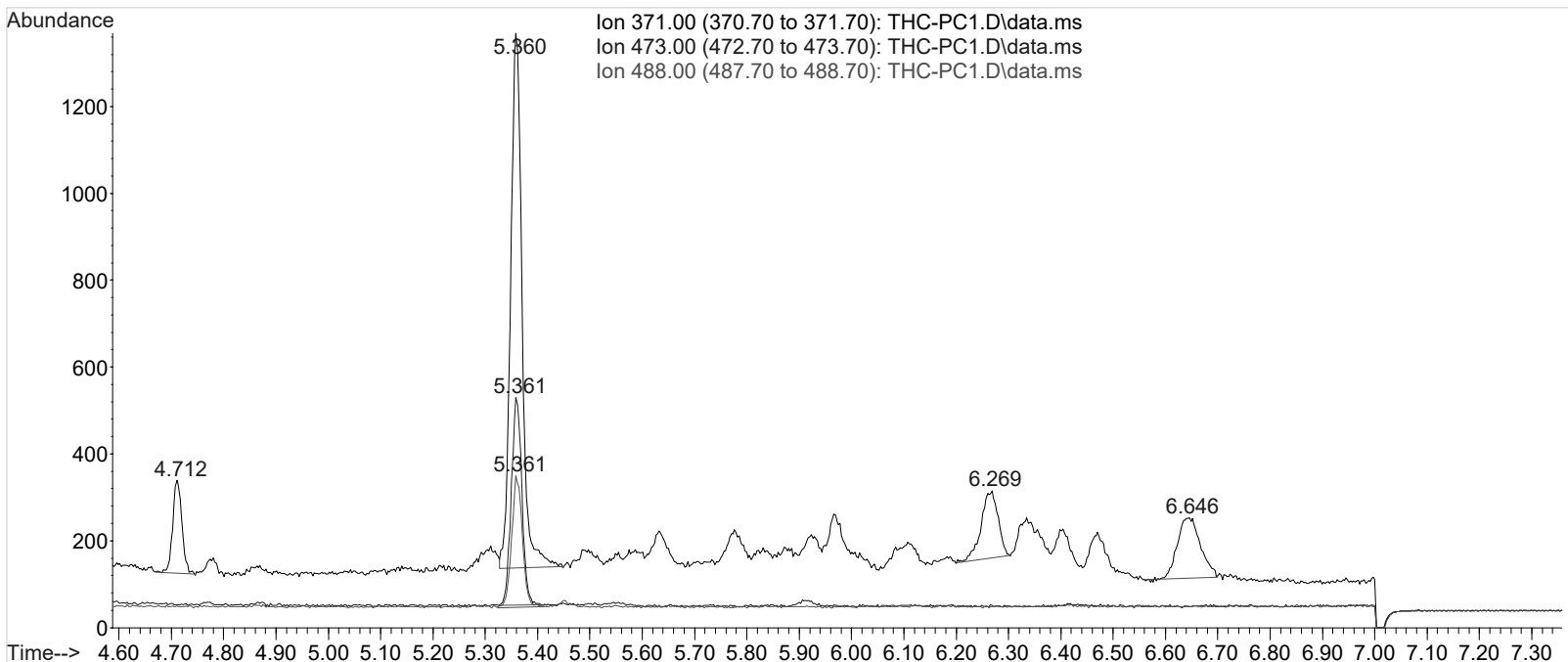
peak #	R.T. min	first scan	max scan	last scan	PK TY	peak height	corr. area	corr. % max.	% of total
1	5.361	258	270	286	BB	474	6701	100.00%	100.000%

Sum of corrected areas: 6701  
Signal : EIC Ion 488.00 (487.70 to 488.70): THC-PC1.D\data.ms

peak #	R.T. min	first scan	max scan	last scan	PK TY	peak height	corr. area	corr. % max.	% of total
1	5.361	257	270	288	BB	298	4297	100.00%	100.000%

Sum of corrected areas: 4297

TOX.M Fri Mar 02 09:38:46 2018



Data Path : I:\Instrument Data\Pocatello\Major Mass Spec\CDS\2018\am 3 worklist 2224\  
 Data File : THC-PC2.D  
 Acq On : 01 Mar 2018 17:40  
 Operator : ISP\datastor  
 Sample : Spiked Positive c-THC Control  
 Misc : c-THC lot # 0497429 in Negative Lot # POC112116; WorklistAM #3; Worklist 2224  
 ALS Vial : 2 Sample Multiplier: 1

Integration Parameters: events.e  
 Integrator: ChemStation

Method : C:\gcms\1\methods\TOX.M  
 Title :

Signal : EIC Ion 371.00 (370.70 to 371.70): THC-PC2.D\data.ms

peak #	R.T. min	first scan	max scan	last scan	PK TY	peak height	corr. area	corr. % max.	% of total
1	4.715	35	45	55	BV	417	4815	13.96%	5.672%
2	5.362	259	270	303	VV	2265	34480	100.00%	40.620%
3	5.636	356	365	381	VV	150	2945	8.54%	3.469%
4	5.780	398	415	426	PV	99	1983	5.75%	2.336%
5	5.971	474	481	509	VV	195	4967	14.41%	5.852%
6	6.269	545	585	598	VV	330	11407	33.08%	13.438%
7	6.337	598	609	625	VV	227	7445	21.59%	8.771%
8	6.407	625	633	645	VV	176	3834	11.12%	4.516%
9	6.476	645	657	687	VB	186	4810	13.95%	5.666%
10	6.647	692	716	753	BV	259	8199	23.78%	9.659%

Sum of corrected areas: 84885  
 Signal : EIC Ion 473.00 (472.70 to 473.70): THC-PC2.D\data.ms

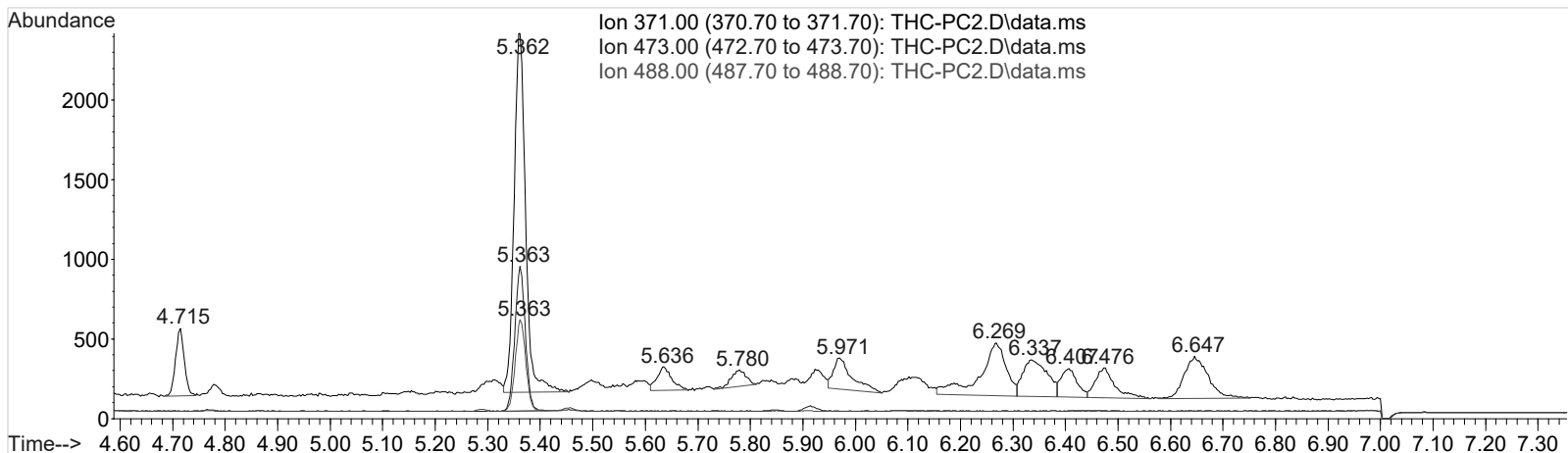
peak #	R.T. min	first scan	max scan	last scan	PK TY	peak height	corr. area	corr. % max.	% of total
1	5.363	258	270	290	BB	900	12653	100.00%	100.000%

Sum of corrected areas: 12653  
 Signal : EIC Ion 488.00 (487.70 to 488.70): THC-PC2.D\data.ms

peak #	R.T. min	first scan	max scan	last scan	PK TY	peak height	corr. area	corr. % max.	% of total
1	5.363	259	270	288	BB	570	8016	100.00%	100.000%

Sum of corrected areas: 8016

TOX.M Fri Mar 02 09:39:13 2018



Data Path : I:\Instrument Data\Pocatello\Major Mass Spec\CDS\2018\am 3 worklist 2224\  
 Data File : THC-Neg Ctrl.D  
 Acq On : 01 Mar 2018 13:08  
 Operator : ISP\datastor  
 Sample : Negative Control  
 Misc : Lot # POC112116; AM #3 Worklist 2224  
 ALS Vial : 1 Sample Multiplier: 1

Integration Parameters: events.e  
 Integrator: ChemStation

Method : C:\gcms\1\methods\TOX.M  
 Title :

Signal : EIC Ion 371.00 (370.70 to 371.70): THC-Neg Ctrl.D\data.ms

peak #	R.T. min	first scan	max scan	last scan	PK TY	peak height	corr. area	corr. % max.	% of total
1	4.714	33	45	55	PV	386	4892	59.00%	12.035%
2	5.638	355	366	387	VV	128	2859	34.48%	7.033%
3	5.779	387	415	428	PV	106	1958	23.61%	4.817%
4	5.974	474	483	510	VB	192	4344	52.39%	10.687%
5	6.269	564	585	597	VV	315	8292	100.00%	20.399%
6	6.334	597	608	624	VV	194	6288	75.83%	15.469%
7	6.404	624	632	645	VV	144	3023	36.45%	7.436%
8	6.472	645	656	673	VV	116	2294	27.66%	5.643%
9	6.648	685	717	743	BV	211	6699	80.79%	16.481%

Sum of corrected areas: 40648

Signal : EIC Ion 473.00 (472.70 to 473.70): THC-Neg Ctrl.D\data.ms

peak #	R.T. min	first scan	max scan	last scan	PK TY	peak height	corr. area	corr. % max.	% of total
--------	----------	------------	----------	-----------	-------	-------------	------------	--------------	------------

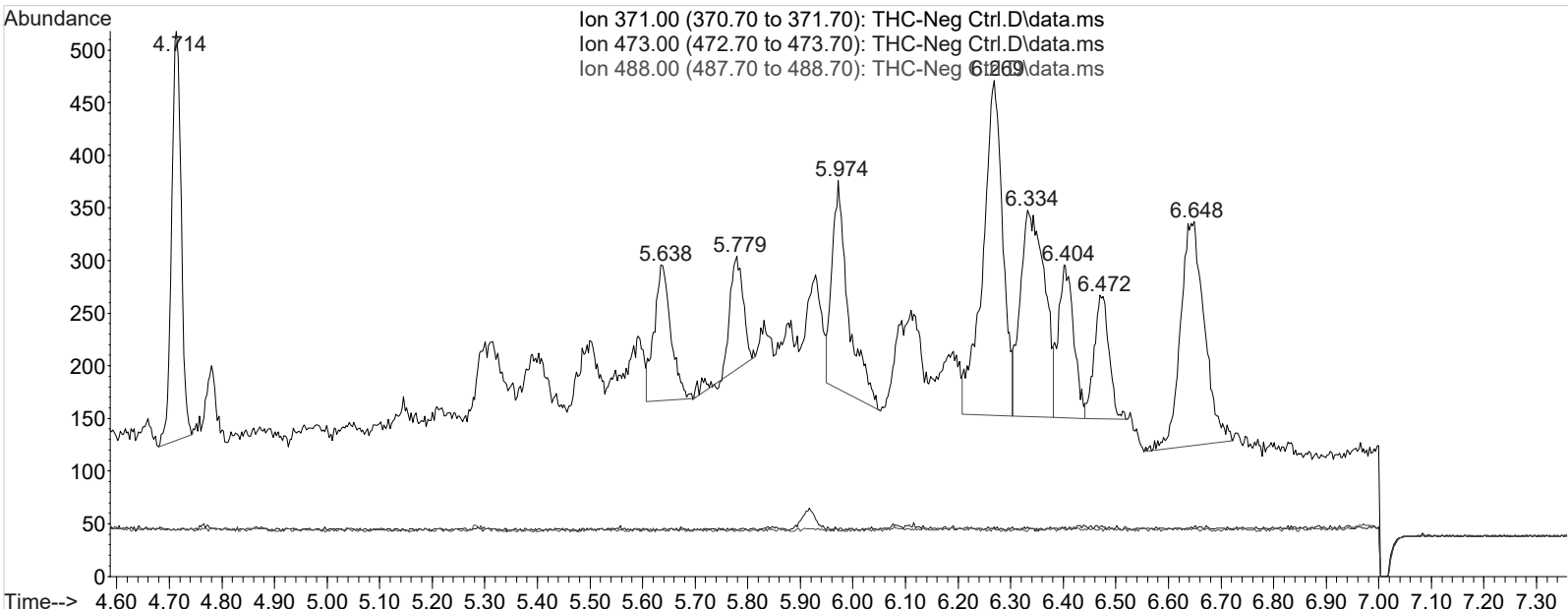
No peaks were detected using the method integration parameters!

Signal : EIC Ion 488.00 (487.70 to 488.70): THC-Neg Ctrl.D\data.ms

peak #	R.T. min	first scan	max scan	last scan	PK TY	peak height	corr. area	corr. % max.	% of total
--------	----------	------------	----------	-----------	-------	-------------	------------	--------------	------------

No peaks were detected using the method integration parameters!

TOX.M Fri Mar 02 09:39:28 2018



Data Path : I:\Instrument Data\Pocatello\Major Mass Spec\CDS\2018\am 3 worklist 2224\  
 Data File : THC-C3.D  
 Acq On : 01 Mar 2018 13:42  
 Operator : ISP\datastor  
 Sample : Biorad C3 Control  
 Misc : C3 Lot # 68440; Worklist 2224  
 ALS Vial : 3 Sample Multiplier: 1

Integration Parameters: events.e  
 Integrator: ChemStation

Method : C:\gcms\1\methods\TOX.M  
 Title :

Signal : EIC Ion 371.00 (370.70 to 371.70): THC-C3.D\data.ms

peak #	R.T. min	first scan	max scan	last scan	PK TY	peak height	corr. area	corr. % max.	% of total
1	4.712	34	45	54	BV	407	4893	30.16%	8.467%
2	5.359	258	269	280	VV	1184	16221	100.00%	28.071%
3	5.636	340	365	384	VV 2	130	4547	28.03%	7.868%
4	5.779	384	415	425	PV	91	2043	12.60%	3.536%
5	5.967	473	480	511	VV	165	3811	23.49%	6.595%
6	6.265	561	584	597	VV	283	8329	51.35%	14.414%
7	6.335	597	608	624	VV	190	6457	39.81%	11.174%
8	6.470	644	655	683	VV	166	4091	25.22%	7.079%
9	6.641	691	714	754	PB	229	7395	45.59%	12.797%

Sum of corrected areas: 57786

Signal : EIC Ion 473.00 (472.70 to 473.70): THC-C3.D\data.ms

peak #	R.T. min	first scan	max scan	last scan	PK TY	peak height	corr. area	corr. % max.	% of total
1	5.360	255	270	288	BB	465	6657	100.00%	100.000%

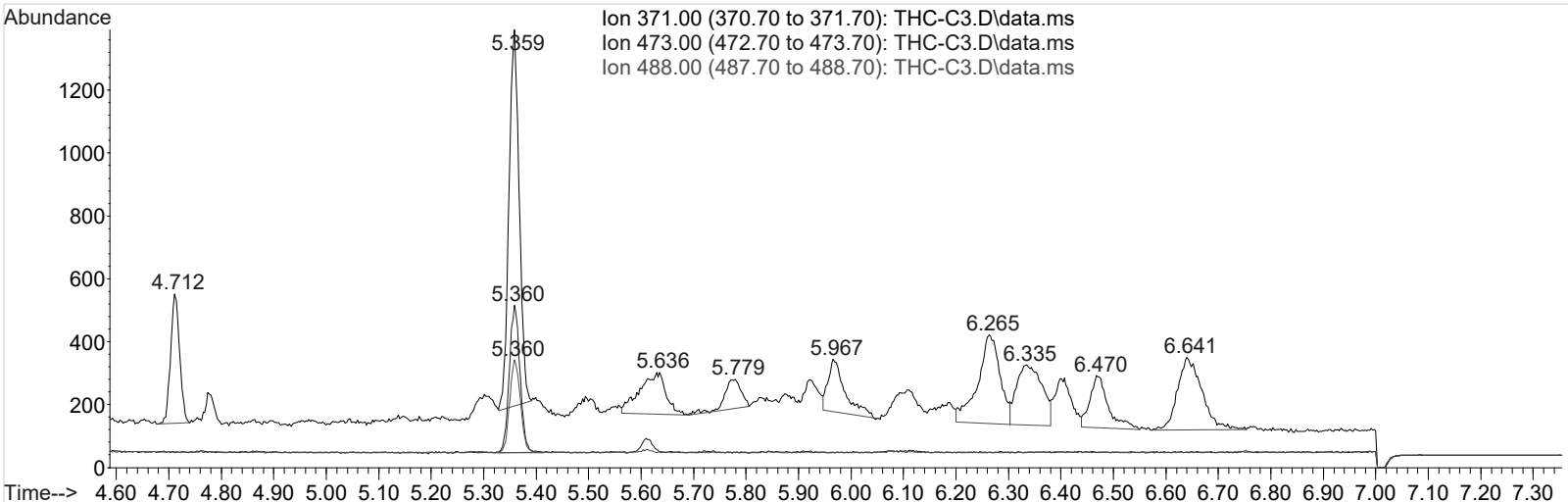
Sum of corrected areas: 6657

Signal : EIC Ion 488.00 (487.70 to 488.70): THC-C3.D\data.ms

peak #	R.T. min	first scan	max scan	last scan	PK TY	peak height	corr. area	corr. % max.	% of total
1	5.360	259	270	288	BB	293	4182	100.00%	100.000%

Sum of corrected areas: 4182

TOX.M Fri Mar 02 09:39:40 2018



# AM #3 Urine Carboxy-THC QC Calculations

g

Run Date: 3/1/2018

Case Calculations:  
Lab Case #: BRC3 68440

<i>EIC Ion 371 Corr. Area:</i>	16221	
<i>EIC Ion 473 Corr. Area:</i>	6657	473:371 Ratio: <span style="background-color: #cccccc; padding: 2px; text-align: center;">0.410</span>
<i>EIC Ion 488 Corr. Area:</i>	4182	488:371 Ratio: <span style="background-color: #cccccc; padding: 2px; text-align: center;">0.258</span>

Quality Control Calculations:

Retention Time acceptable range: 5.262 to 5.46

	<i>1st ctrl</i>	<i>2nd ctrl</i>
<i>EIC Ion 371 Corr. Area:</i>	18832	34480
<i>EIC Ion 473 Corr. Area:</i>	6701	12653
<i>EIC Ion 488 Corr. Area:</i>	4297	8016

*Approximate minimum corrected area of 371 ion: ~* 3766

<i>Ratio of 473:371</i>						
	<i>1st ctrl</i>	<b><u>0.356</u></b>	<i>2nd ctrl</i>	<b><u>0.367</u></b>	<i>avg.</i>	<b><u>0.361</u></b>
<i>Accepted Range</i> (+/- 20%)		<b><u>0.289 - 0.434</u></b>				

<i>Ratio of 488:371</i>						
	<i>1st ctrl</i>	<b><u>0.228</u></b>	<i>2nd ctrl</i>	<b><u>0.232</u></b>	<i>avg</i>	<b><u>0.230</u></b>
<i>Accepted Range</i> (+/- 20%):		<b><u>0.184 - 0.276</u></b>				

Carboxy-calculation sheet  
Revision 0 effective date 10/23/13  
Issuing authority: Quality Manager